

GAS METAL INSERTS | FOR FIREPLACES

**QUADRA-FIRE**

PURE PERFORMANCE



## PERFORMANCE MEETS CONVENIENCE

Direct vent gas inserts provide the warmth and glow of a real wood burning fire without any of the inconvenience. These energy efficient and AFUE rated gas inserts offer an airtight seal for peace of mind and comfort when enjoying a beautiful fire. Combine any insert with the wide range of control options and a warm, cozy room is just a flip of the switch away.

Cover: QF130 shown with Firescreen front in Sienna Bronze.  
Above: QF135 shown with Firescreen front in Black.

---

# GAS METAL INSERTS

## QFI35

The QFI35 offers the look and feel of a real wood fire. Ceramic fiber logs and glowing ember bed are enhanced by the dramatic herringbone interior. The IntelliFire™ Plus system, high heat output and efficient advanced flame technology offer comfort and convenience. QFI35 shown with Affinity Arch front in Sienna Bronze.



## QFI30

The QFI30 also features a herringbone refractory framing the realistic fire with large flames and a glowing ember bed. Easy-access controls allow the fan speed, flame appearance and heat output levels to be adjusted easily. QFI30 shown with Tudor Panel front in Black.



## FEATURES & BENEFITS

- Beautiful, efficient fire — realistic flame and glow
- IntelliFire™ Plus advanced intermittent pilot ignition system eliminates the wasted fuel of a standing pilot system
- Standard blower to maximize your efficiency and heat output
- Choice of wireless controls makes all functions easy to use
- 50% turndown gives you control of the heat and allows you to enjoy the fire longer
- Dual variable-speed blowers for greater control and increased efficiency
- Fronts and low profile surrounds to fit any décor
- Standard herringbone refractory
- Customized sturdy grate with andirons





## A NEW FIREPLACE IN FOUR EASY STEPS

- 1) Measure your existing fireplace
- 2) Choose your insert
- 3) Choose your surround
- 4) Finish with a front

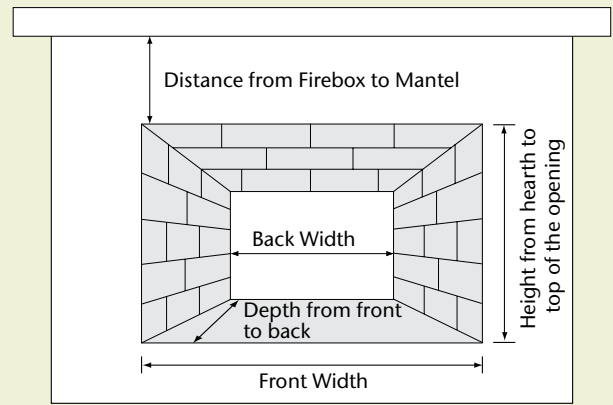
Above: QFI30 shown with Tudor Panel front in Black.

---

# GAS METAL INSERTS

## STEP 1 MEASURE YOUR EXISTING FIREPLACE

We'll need the height, width and depth of the existing fireplace opening to ensure that the proper-sized insert is selected.



## STEP 2 CHOOSE YOUR INSERT

There are two main factors to consider when selecting an insert. First, consider the height of your existing fireplace opening. You'll want to choose the tallest insert that will fit into your existing fireplace. Second, consider how the insert will be used. Do you have a large room, do you want a lot of heat or a little, and how long do you plan to run the fireplace? These answers will direct you to the insert that is ideal for you and your home.



### QFI35

- Minimum fireplace opening: 22-3/4" high
- Ideal size for larger firebox openings
- 35,000 Btu/Hr Input (NG)
- Heats up to 1,800 sq. ft.
- 7 split oak-style logs



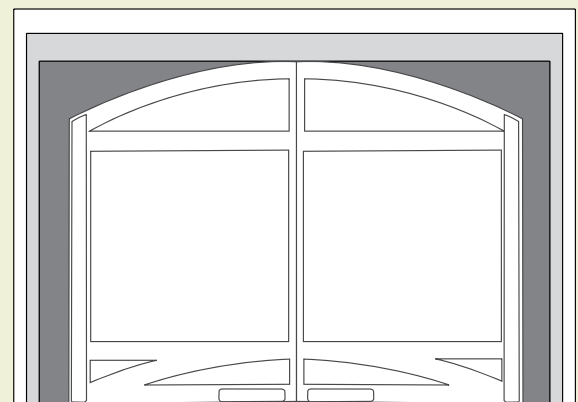
### QFI30

- Minimum fireplace opening: 19-1/8" high
- Ideal size for smaller firebox openings
- 32,000 Btu/Hr Input (NG)
- Heats up to 1,800 sq. ft.
- 6 split oak-style logs

## STEP 3 CHOOSE YOUR SURROUND

To bring a finished and polished look to your new insert you need a matching metal surround to cover the gap between the insert and your existing fireplace opening. Offered in three standard sizes and two color options, including black and sienna bronze, you're sure to find the perfect fit for your space.

SURROUND	QFI35	QFI30
Small	42" x 29"	40" x 27"
Medium	44" x 32"	42" x 30"
Large	48" x 32"	44" x 32"



■ SMALL SURROUND

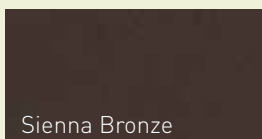
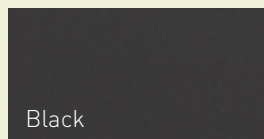
■ MEDIUM SURROUND

□ LARGE SURROUND

# GAS METAL INSERTS

## STEP 4 FINISH WITH A FRONT

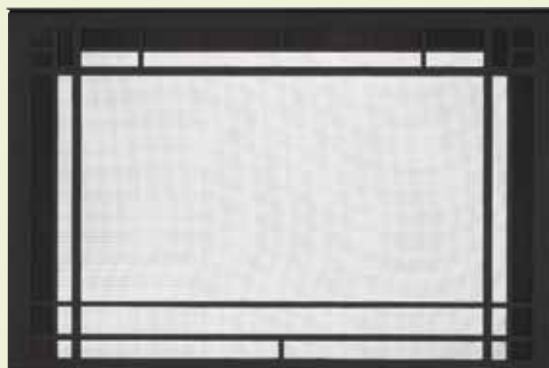
Complete your insert with a stylish front or operable door, available in two finishes.



Affinity Arch



Tudor Panel



Firescreen

All Quadra-Fire gas inserts include the IntelliFire Plus ignition system to save fuel, improve efficiency and make your fire easier to use. There is an on/off switch on each surround, and other functions can be controlled under the insert, but to take full advantage of the IntelliFire Plus system, choose one of the controls listed below.

## INTELLIFIRE PLUS IGNITION SYSTEM AND WIRELESS CONTROLS



The IntelliFire Plus Ignition System is an “intelligent” control system providing energy conservation and the comfort of a roaring fire, all at your fingertips! IntelliFire Plus features intermittent-pilot ignition (IPI) allowing you to conserve fuel and money when the fireplace is not in use. Optional constant pilot mode allows you to leave the pilot flame on in cold climates. In

addition, the system offers seamless transition from AC to battery backup in a power outage, as well as built-in safety features and memory settings. Lastly, our new family of IntelliFire Plus wireless and ergonomic controls provide stylish and fully featured benefits that make controlling your heat easier than ever.

**INTELLIFIRE PLUS RC300** incorporates an LCD screen, intuitive menus and large control buttons in a sleek and modern design. This wireless control gives you the flexibility to use as a remote only or mount on the wall anywhere in the room.

**MODEL:** RC300-QDF

**FEATURES:** Auto Battery Backup, Pilot Activation, On/Off, 5 Step Flame Height, Fan Speed (Auxiliary 1), Two Additional Auxiliary Functions, Room Temperature Readout, Thermostat Mode, Timer Mode, Child Lock, Wall Docking Station



**INTELLIFIRE PLUS RC200** combines an easy-to-use and intuitive control panel with a stylish and ergonomic design. Since it utilizes wireless control, it has the flexibility for wall placement anywhere in the room, or use as a remote only.

**MODEL:** RC200-QDF

**FEATURES:** Auto Battery Backup, Pilot Activation, On/Off, 5 Step Flame Height, Fan Speed, Child Lock, Wall Docking Station



**INTELLIFIRE PLUS RC100** features a simple, single mode function and is specifically designed for wall placement ensuring a great fire is just a tap of the switch away.

**MODEL:** RC100-QDF

**FEATURES:** On/Off




**STANDARD REFRACTORY**

Both the QFI35 and the QFI30 come standard with herringbone refractory.



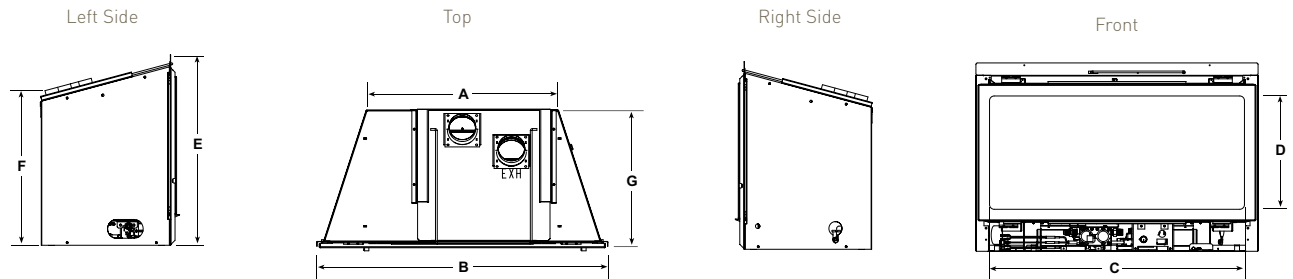
Herringbone

	GAS METAL INSERT SPECIFICATIONS								
	Technical Data					Performance			
	Shipping Weight	Flue Size	Ignition System	Mobile Home Approved	Bedroom Approved	Btu/Hr Input* (NG)	Btu/Hr Input* (LP)	Heating Capacity*	Convection Blower
QFI35	87 lbs	3" x 3" Direct Vent	IntelliFire Plus	Yes	Yes	18,500 - 35,000	17,000 - 35,000	up to 1,800 sq. ft.	120 cfm
QFI30	72 lbs	3" x 3" Direct Vent	IntelliFire Plus	Yes	Yes	18,000 - 32,000	15,500 - 31,000	up to 1,800 sq. ft.	120 cfm

**DIMENSIONS**

MODEL	FRONT WIDTH		BACK WIDTH		HEIGHT		DEPTH		VIEWING AREA
	UNIT	MIN. FIREBOX OPENING	UNIT	MIN. FIREBOX OPENING	UNIT	MIN. FIREBOX OPENING	UNIT	MIN. FIREBOX OPENING	
QFI-35	34-5/8"	33-1/4"	23-1/2"	24"	24"	22-5/8"	15-7/8"	15-1/8"	31-5/8" X 15-3/4"
QFI-30	30-1/2"	29-1/4"	20-1/4"	20-1/2"	20-1/2"	19-1/8"	14-5/8"	13-7/8"	27-1/2" X 12-7/8"

Minimum firebox openings are for D surrounds. For all other surrounds, add 1-3/8" to height and width and 7/8" to minimum depth.



MODEL	A	B	C	D	E	F	G
QFI35	23-1/2"	34-5/8"	31-5/8"	15-3/4"	24"	21-1/8"	15-7/8"
QFI30	20-1/4"	30-1/2"	27-1/2"	12-7/8"	20-1/2"	17-5/8"	14-5/8"

\* Heating capacity (in square feet) is a guideline only and may differ slightly due to climate, building construction and condition, amount and quality of insulation, location of the heater, and air movement in the room. BTUs will vary depending on the type of fuel used.

## GAS EFFICIENCIES

**Steady State** - Since most homeowners use their appliance for an extended time while they are in the room, Steady State measure how efficiently your appliance converts fuel to heat once it is warmed up and running in a "steady state".

**AFUE** - AFUE rating is more typically used with appliances, like your furnace, that continually cycle on and off to maintain a constant temperature.

**EnerGuide (CSA P.4.1-02)** - EnerGuide is a rating used in Canada to measure annual efficiency.

INSERT	U. S. EFFICIENCIES				CANADA ENERGUIDE	
	Steady State		AFUE		CSA P4.1-02	
	NG	LP	NG	LP	NG	LP
QFI35	78.5%	79.0%	73.5%	76.2%	72.2%	76.1%
QFI30	84.1%	83.9%	73.2%	73.4%	72.7%	71.7%




# QUADRA-FIRE®

NOTHING BURNS LIKE A QUAD

A brand of Hearth & Home Technologies®

1445 North Highway, Colville, WA 99114

www.quadrafire.com | 800-926-4356

 facebook.com/QuadraFire
  twitter.com/QuadraFire
  youtube.com/QuadraFirePower

Available From:

### Limited Lifetime Warranty\*\*

The strongest in the industry, Quadra-Fire provides a limited lifetime warranty on the most important aspects: firebox and heat exchanger.

\*\* For full warranty details go to [www.quadrafire.com](http://www.quadrafire.com)

IMPORTANT - READ BEFORE YOU INSTALL!

Refer to the Owner/Installation Manual for complete clearance requirements and specifications. The images and descriptions in this brochure are provided to assist you in product selection only.

Quadra-Fire is a registered trademark of Hearth & Home Technologies. Product specifications and pricing subject to change without notice.

