

Part number list on following page.

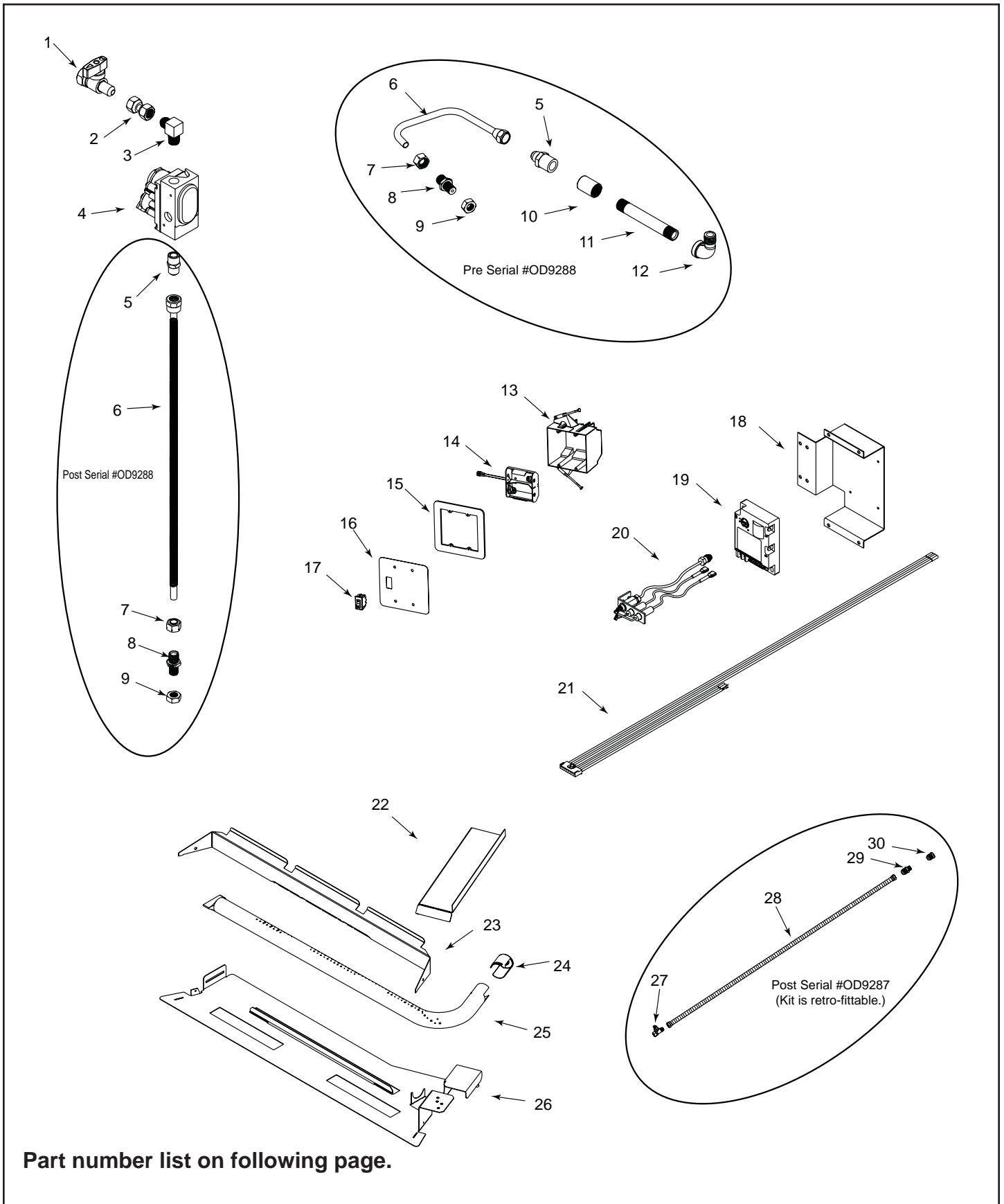
IMPORTANT: THIS IS DATED INFORMATION. When requesting service or replacement parts for your appliance please provide model number and serial number. All parts listed in this manual may be ordered from an authorized dealer.



**Stocked
at Depot**

ITEM	DESCRIPTION	COMMENTS	PART NUMBER	
1	Upper Face		4036-197	
2	Top Standoffs	Qty 4 req	13433	
3	Nailing Flange	Qty 4 req	31190	
4	Intermediate Shell Access Panel		4036-139	
5	Inner Shell Access Panel		4036-137	
6	Gas Hood		4036-195	
7	Top Door Support Assembly		4036-082	Y
8	Door Grille Bar	Qty 4 req	4036-177	
9	Bottom Door Support Assembly		4036-083	Y
	Left Glass Door Assembly		4036-097	Y
10	Door Handle		4021-350	
11	Left Bottom Pivot Pin		4036-116	
13	Glass Panel Assembly		4036-020	
14	Left Top Pivot Pin		4036-119	
	Right Glass Door Assembly		4036-096	Y
10	Door Handle		4021-350	
12	Right Bottom Pivot Pin		4036-115	
13	Glass Panel Assembly		4036-020	
15	Right Top Pivot Pin		4036-118	
16	Door Locks	Qty 2 req	4036-226	
17	Herringbone Left Side Refractory		4036-148	
18	Herringbone Back Refractory		4010-015	
19	Herringbone Right Side Refractory		4036-147	
20	Herringbone Hearth Refractory		4036-152	
21	Traditional Brick Left Side Refractory		4036-146	
22	Side Refractory Cover	Qty 2 req	4036-133	
23	Back Refractory Bracket		4036-121	
24	Traditional Brick Back Refractory		28394	
25	Traditional Brick Right Side Refractory		4036-145	
26	Traditional Brick Hearth Refractory		4036-740	
27	Grate		4036-067	
28	Grate Retainer Clip	Qty 2 req	28062	
	Hearth Fiber Coal Bed		4036-730	
	Installation Instructions & Owner's Manual		4036-909	
	Lava Rock		4021-296	
	Outer Shell Access Panel		4036-186	
	Outer Shell Access Panel Fastener Pack		4025-007	
	Conversion Kit NG to LP		LPK-DAKOTA-B	Y
	Conversion Kit LP to NG		NGK-DAKOTA-B	Y

Additional service parts on following page.



Part number list on following page.

IMPORTANT: THIS IS DATED INFORMATION. When requesting service or replacement parts for your appliance please provide model number and serial number. All parts listed in this manual may be ordered from an authorized dealer.



**Stocked
at Depot**

ITEM	DESCRIPTION	COMMENTS	PART NUMBER	
1	ON/OFF Valve		15697	Y
2	3/8 Swivel Nut Connector		4021-561	
3	Brass Elbow		4021-098	
4	Valve NG		593-500	Y
	Valve LP		593-501	Y
5	Brass Fitting (1/2-3/8)		19641	
6	Flex Burner Line Kit	Post SN #OD9287	SRV4036-260	
7	Compression Nut		32553	
8	Burner Orifice NG		4021-134	Y
	Burner Orifice LP		32562	Y
9	Jam Nut (1/2-20)		32563	
10	3/8 in. NPT Pipe Coupler	Pre SN #OD9288	4021-349	
11	3/8 Male NPT x 4-1/2 in. Pipe	Pre SN #OD9288	4021-348	
12	3/8 NPT Street L	Pre SN #OD9288	4021-347	
13	Switch Box		4021-117	Y
14	Battery Pack		593-594A	Y
15	Electrical Box Gasket		4021-153	
16	Switch Cover Plate		4036-157	
17	ON/OFF Rocker Switch		060-511	Y
	Switch Box Screw Pack		4025-007	
18	Valve Assembly Bracket		4036-179	
19	Control Module		593-592	Y
20	Pilot Assembly NG		593-512A	Y
	Pilot Assembly LP		593-513A	Y
21	IPI Wiring Harness (w/5 ft. Leads)		4021-116	
	Burner Tube Assembly NG		4036-068	
	Burner Tube Assembly LP		4036-069	
22	Pilot Shield		4036-248	
23	Rock Retainer		4036-190	
24	Air Shutter		4036-194	
25	1-1/4 in. Burner Tube NG		4036-187	
	1-1/4 in. Burner Tube LP		4036-188	
26	Burner Tube Bracket		4036-189	
	Switch Box Assembly		4036-040	
Also available:				
	60 in. Flex Line Assembly		SRV4036-044	
27	ON/OFF Valve		4021-115	
28	60 in. Flex Line 5/8 in. dia.		4021-133	Y
29	Coupler - 3/8 Male NPT / 7/8 SAE Flare		4021-114	
30	1/2 in. Male NPT to 3/8 in. Fem. NPT Bush		4021-030	

Additional service parts on following page.

4036-711(Log Set Box #1)



SRV720

4036-712(Log Set Box #2)



SRV727



SRV742



SRV740



SRV722

4036-713(Log Set Box #3)



SRV723



SRV728



SRV724