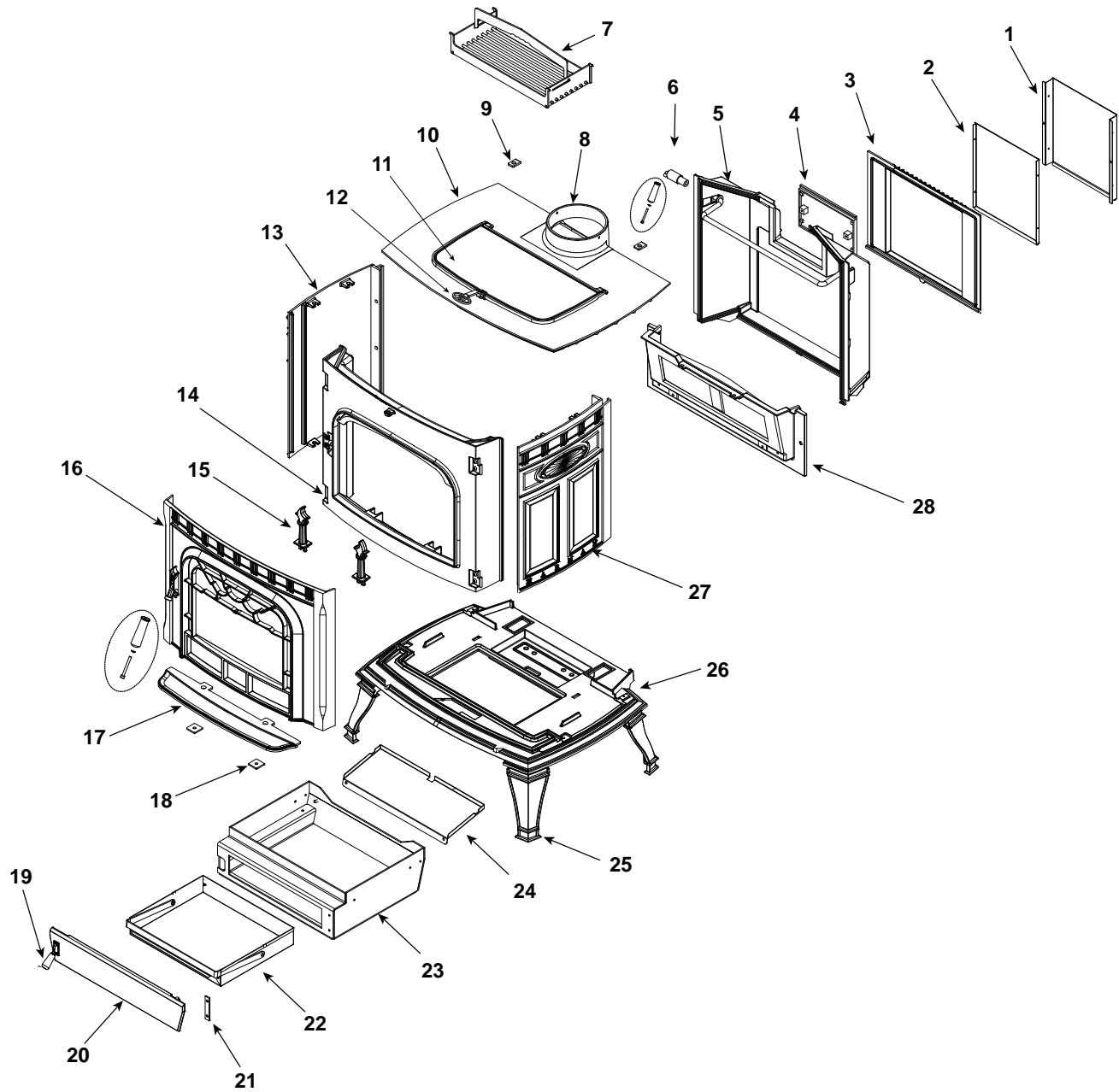


Retired units

1-90-02490-2 (Charcoal) (Ending Manufacturing Date: June 2011)
 1-90-02490-3 (Goldenfire) (Ending Manufacturing Date: June 2011)
 1-90-02490-4 (Metallic Blue) (Ending Manufacturing Date: Jan 2010)

1-90-02490-5 (Honey Glo) (Ending Manufacturing Date: June 2009)
 1-90-02490-10 (Mojave Red) (Ending Manufacturing Date: Jan 2010)
 1-90-02490-12 (Forest Green) (Ending Manufacturing Date: Jan 2010)



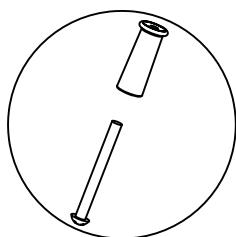
Part number list on following page.

IMPORTANT: THIS IS DATED INFORMATION. When requesting service or replacement parts for your appliance please provide model number and serial number. All parts listed in this manual may be ordered from an authorized dealer.

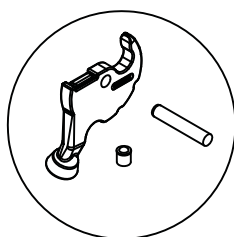


**Stocked
at Depot**

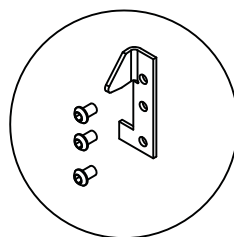
ITEM	DESCRIPTION	COMMENTS	PART NUMBER	
1	UL Label Outer Shield		2-00-249162S	
2	UL Label Inner Shield		2-00-249161S	
3	Rear Housing Cover Assembly w/Gasket		1-10-249116A	
	Gasket	10 Ft	1-00-11862	Y
4	Flue Collar Cover with Gasket		1-10-249109	
5	Rear Housing		4-00-249110S	
	Gasket, 3/8" RD LPSA	10 Ft	1-00-00999	Y
6	Damper Handle Painted		3-50-00500S	Y
7	Cook Grill Assembly	Optional	1-00-08121	
8	Flue Collar		4-00-249108D	
9	Top Hinge Plate	Qty 2 req	2-00-249147S	
10	Top		4-00-249105P	
	Gasket	30 Ft	1-00-00888	Y
11	Top Load Door		3-00-249115P	
	Gasket	5 Ft	1-00-37525	Y
12	Top Load Handle		2-00-249148	
	Top Handle Retainer		2-00-249190	
13	Left Side Panel		4-00-249103D	
14	Inner Front		4-00-249111S	
15	Andiron	Qty 2 req	3-00-249101P	Y
16	Front Load Door		4-00-249112P	Y
	Door Glass		3-40-21130	Y
	Gasket - Glass	15 Ft	1-00-2312	Y
	Gasket - Door	30 Ft	1-00-00888	Y
	Hinge Plate		3-00-249136	



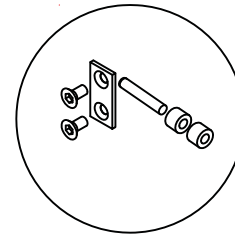
Handle Assembly



Handle & Plunger Kit



**Retainer Plate W/
Hardware**



**Inner Front Plate
Latch Kit**

	Handle Assembly	2 Sets	1-00-00249	Y
	Handle and Plunger Kit		1-00-73765	Y
	Retainer Plate W/Hardware		1-00-249138	Y
	Inner Front Latch Kit		1-00-249143	Y

Additional service part numbers appear on following page.

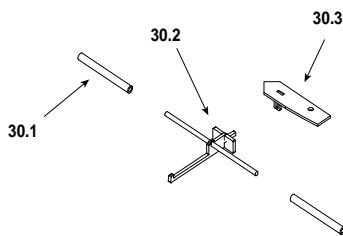
IMPORTANT: THIS IS DATED INFORMATION. When requesting service or replacement parts for your appliance please provide model number and serial number. All parts listed in this manual may be ordered from an authorized dealer.



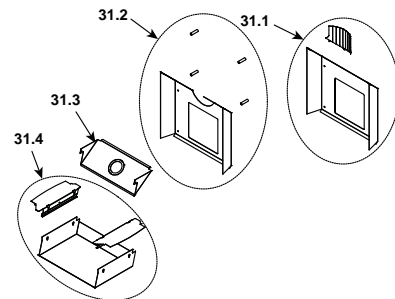
**Stocked
at Depot**

ITEM	DESCRIPTION	COMMENTS	PART NUMBER	
17	Ash Lip		3-00-249121P	
18	Ash Fender Bolt Plate	Qty 2 req	2-00-249169L	
19	Wood Knob	Pkg of 3	3-40-08746-3	
20	Ash Door		4-00-249113D	
	Ash Door Latch Hardware		1-00-24923	Y
	Ash Door Latch		3-00-249149	
	Ash Door Gasket	5 Ft	1-00-43375	Y
21	Hinge Stiffener		2-00-249188L	
22	Ash Pan		1-10-249151	Y
23	Steel Ash Box Weldment		1-10-249144S	
24	Ca Shield		2-00-249157B	
25	Leg	Qty 4 req	4-00-249100P	Y
26	Bottom		4-00-249104D	
27	Right Side Panel		4-00-249102D	
28	Damper Frame Assembly w/Gasket		1-10-249106	Y
	Gasket	30 Ft	1-00-00888	Y
	Damper w/Adjuster		1-10-249107	
	Damper Linkage		1-10-249146	Y
	Damper Shaft Retainers and Hardware	1 Set	1-00-249145	Y
	Adjuster w/Hardware	Pre 00726440	1-00-249142	Y
		Post 008426440	1-00-250153	

#30 Air Slide assembly



#31 Flue Shield Assembly



	Air Slide Assembly			
30.1	Air Adjuster Pipe	Qty 2 req	2-00-249158S	
30.2	Air Adjuster Weldment		1-10-249130S	
30.3	AirSlide Weldment		1-10-249131W	
31.1	Back Heat Shield Kit -Top Vent		1-00-02492	
31.2	Back Heat Shield Kit - Rear Vent		1-00-02493	
31.3	Outside Air Option		1-00-02494	
31.4	Bottom Heat Shield Kit		1-00-02491	

Additional service part numbers appear on following page.

IMPORTANT: THIS IS DATED INFORMATION. When requesting service or replacement parts for your appliance please provide model number and serial number. All parts listed in this manual may be ordered from an authorized dealer.



Stocked at Depot

ITEM	DESCRIPTION	COMMENTS	PART NUMBER	
#32 Firebox Assembly				
32.1	Combustion Package		3-40-06999	Y
32.2	Inlet Brick Right		3-40-00104	Y
32.3	Logo Brick		3-40-00101	Y
32.4	Inlet Brick Left		3-40-00103	Y
32.5	Upper Brick Clip	Pkg of 2	1-00-249172	Y
32.6	Rear Brick Clip	Pkg of 2	1-00-249153	Y
32.7	Cast Left Inside Plate w/Gasket		1-10-249117A	Y
32.8	Grate		2-00-249122	Y
32.9	Cast Right Inside Plate w/Gasket		1-10-249118A	Y
32.10	Rear Brick Retainer	Pkg of 2	1-00-249135	
32.11	Shoe Brick		3-40-00100	Y
	Gasket, shoe Brick		3-44-06951	Y
32.12	Side Brick	Qty 2 req	3-40-00102	Y
	Brick Insulation	Qty 2 req	3-40-00250	
Hardware Packages				
	Bolt, 5/16-18 x 2" Zinc Plated Carriage	Pkg of 25	3-30-4001-25	Y
	Bushing 3/8 OD X 1/4" OAL	Pkg of 5	3-50-00058-5	Y
	Nut, 1/4"-20 Zinc Plated Finished Hex	Pkg of 100	3-30-8004-100	Y
	Screw, 5/16"-18 x 3/8" Alloy Steel Black Oxide Knurled Point SSS	Pkg of 25	3-30-2004-25	Y
	Screw, 1/4"-20 x 1" Alloy Steel Black Oxide Socket Head Cap	Pkg of 50	3-30-3004-50	Y
	Screw, 1/4"-20 x 3/8" Alloy Steel Black Oxide Button Head Cap	Pkg of 100	3-30-3014-100	Y
	Washer, 1/4" Zinc Plated USS Flat	Pkg of 100	3-30-0202-100	Y
	Washer, 5/16" Zinc Plated SAE Flat	Pkg of 50	3-30-0205-50	Y
	Washer-D 5/16	Pkg of 4	3-30-0400311-4	